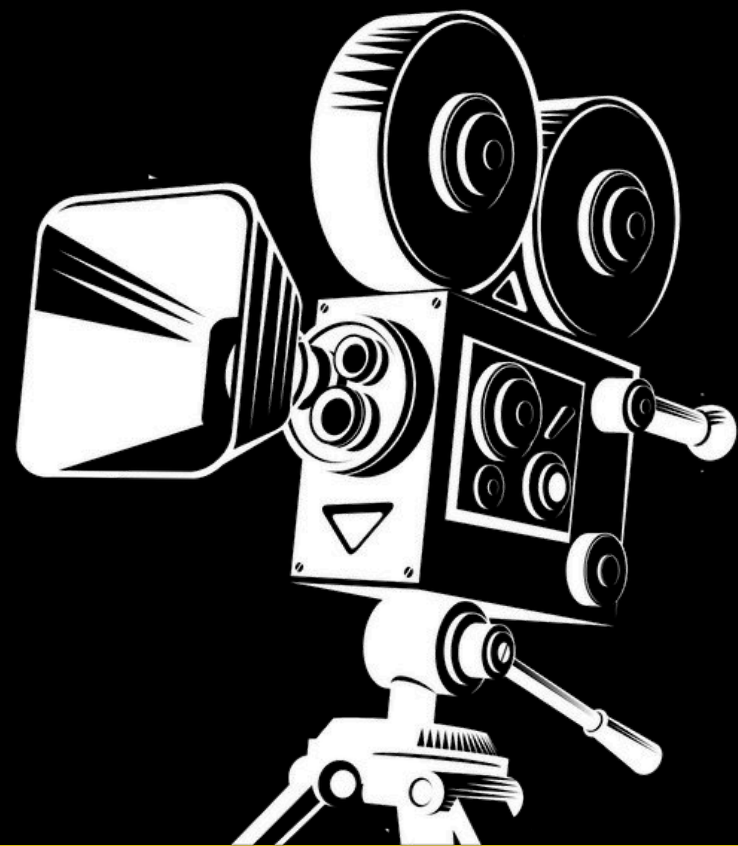


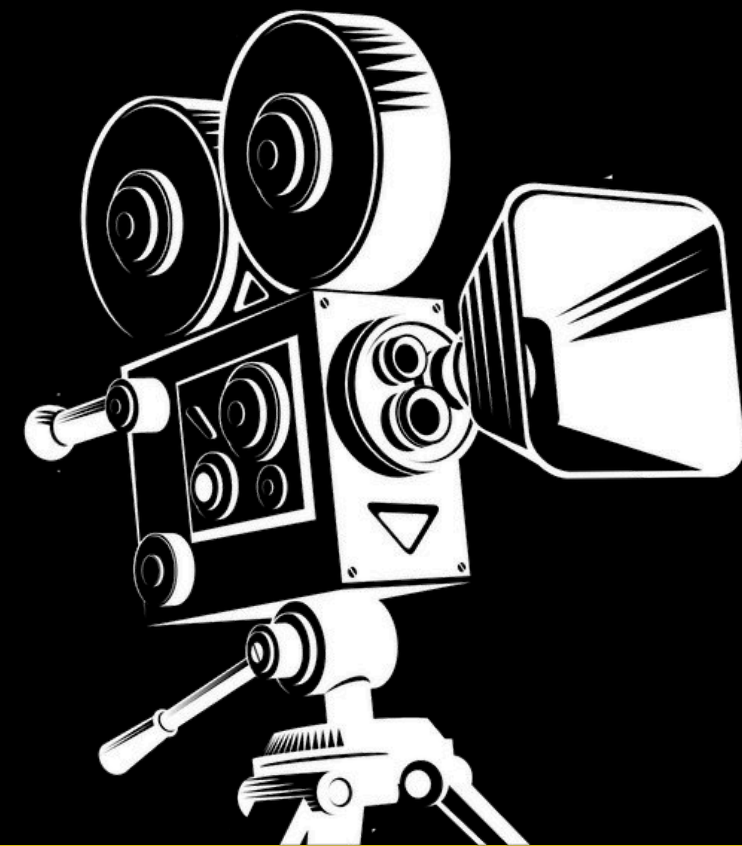
THE TOTAL ARTS FILM FESTIVAL

BIG TROUBLE

LITTLE PICTURES



2025



TOTAL ARTS FILM FESTIVAL

HELLO AND WELCOME!

TOTAL ARTS

Total Arts is Cambridge Junction's fortnightly arts group for disabled young people. Running since 2010, the group engage with high quality arts activities led by the young people and supported by professional artists, enhancing their confidence, communication, well-being, creativity and exploring career progression pathways through paid experiences.

FILM FESTIVAL HISTORY

Since launching in 2017, Total Arts has continued to grow its film festival. The festival began by showcasing films made by the group alongside work from Spring Common Academy as part of a long-standing collaboration. In 2018, it evolved into a public-facing event. Each year, Cambridge Junction works with specialist schools and groups to co-create original short films with young people who have complex needs, culminating in a celebratory big-screen premiere.

2025

Now in its eighth year, the festival has grown into a vibrant two-day celebration held at both The Light Cinema and Cambridge Junction. We're proud to be showcasing the filmmaking talents of over 100 young people who've taken part in our Creative Learning programmes and projects over the past year. The event also features Behind the Scenes footage that captures the creative journey behind the films.

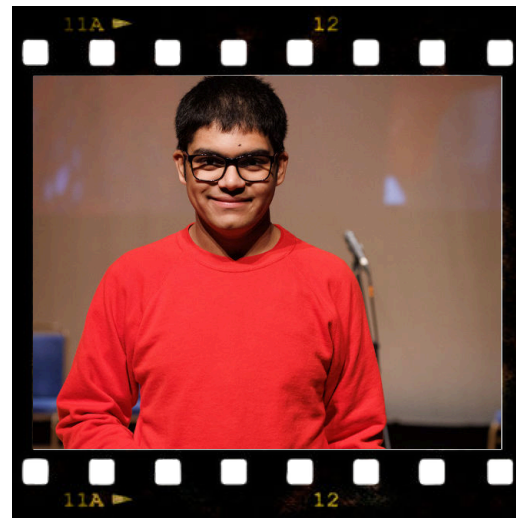
Throughout the festival, you'll enjoy inspiring speeches, award ceremonies, and a relaxed disco hosted by The Funky Club, alongside screenings of the incredible music videos and films made by young people over the past year. We're thrilled to have you with us as we celebrate the remarkable creativity of young filmmakers from across Cambridgeshire.

We hope you enjoy the Total Arts Film Festival 2025 – BIG TROUBLE LITTLE PICTURES!



TOTAL ARTS

The faces behind the festival!



TUESDAY RUNNING ORDER

MORNING SCREENING

At the Light Cinema from 10am

HANDS-ON HAPPENINGS Join Laura at the craft table and get involved in making your own film themed fan and VIP lanyard!

POPCORN STATION Don't forget to grab your complimentary popcorn before you enter the theatre!

FILMS *From 10.30am*

The screening is for 11+ audiences.

- **The Juice Detective 2** - Melbourn Cabin
- **Animation** - The Croft
- **Containment Breach of the Deadly SCP 096** - St Peter's Cabin
- **The Case of the Intergalactic Nuisance** - St Peter's Cabin
- **Documentary** - St Peter's Cabin
- **Animation** - The Darwin Centre
- **The Red Pin** - Red Balloon
- **This Is Reality** - Sakara
- **Adventure of Deriko** - Red Balloon
- **Glitch** - Total Arts
- **Worm Burgers** - Total Arts Mini Bytes

AGE RATING 11+ This rating has been set as certain films include confrontation and references to violence.

• For more information on warnings/considerations please see individual film listings.

EVENING SCREENING

At the Light Cinema from 6pm

HANDS-ON HAPPENINGS Join Laura at the craft table and get involved in making your own film-themed fan and VIP lanyard!

DRINKS RECEPTION Enjoy a pre-show drink with some of the movie creators, makers and shakers.

FILMS *From 6.30pm*

The screening is for 11+ audiences.

- **The Juice Detective 2** - Melbourn Cabin
- **Animation** - The Croft
- **Containment Breach of the Deadly SCP 096** - St Peter's Cabin
- **The Case of the Intergalactic Nuisance** - St Peter's Cabin
- **Documentary** - St Peter's Cabin
- **Animation** - The Darwin Centre
- **The Red Pin** - Red Balloon
- **This Is Reality** - Sakara
- **Adventure of Deriko** - Red Balloon
- **Glitch** - Total Arts
- **Worm Burgers** - Total Arts Mini Bytes

AWARD CEREMONY *at Cambridge Junction from 7.30pm*

Who will be taking home an 'Oscar'? Expect speeches, celebrations, nibbles and drinks.

FUNKY CLUB *from 8pm*

Join us in the Cambridge Junction foyer as the Funky Club DJs host a rocking disco!

WEDNESDAY RUNNING ORDER

MORNING SCREENING

At the Light Cinema from 10am

HANDS-ON HAPPENINGS Join Laura at the craft table and get involved in making your own film themed fan and VIP lanyard!

POPCORN STATION Don't forget to grab your complimentary popcorn before you enter the theatre!

FILMS *From 10.30am*

The screening is for 14+ audiences.

- **The Juice Detective 2** - Melbourn Cabin
- **Animation** - The Croft
- **Containment Breach of the Deadly SCP 096** - St Peter's Cabin
- **The Case of the Intergalactic Nuisance** - St Peter's Cabin
- **Documentary** - St Peter's Cabin
- **Animation** - The Darwin Centre
- **The Red Pin** - Red Balloon
- **This Is Reality** - Sakara
- **Adventure of Deriko** - Red Balloon
- **Poison Dart** - LambChop 47
- **The Watchman** - Olive AP Academy
- **Glitch** - Total Arts
- **Worm Burgers** - Total Arts Mini Bytes

AGE RATING 14+ This rating has been set as certain films include strong language, violence, sexual references and drug references.

• For more information on warnings/considerations please see individual film listings.

EVENING SCREENING

At the Light Cinema from 6pm

HANDS-ON HAPPENINGS Join Laura at the craft table and get involved in making your own film-themed fan and VIP lanyard!

DRINKS RECEPTION Enjoy a pre-show drink with some of the movie creators, makers and shakers.

FILMS *From 6.30pm*

The screening is for 14+ audiences.

- **The Juice Detective 2** - Melbourn Cabin
- **Animation** - The Croft
- **Containment Breach of the Deadly SCP 096** - St Peter's Cabin
- **The Case of the Intergalactic Nuisance** - St Peter's Cabin
- **Documentary** - St Peter's Cabin
- **Animation** - The Darwin Centre
- **The Red Pin** - Red Balloon
- **This Is Reality** - Sakara
- **Adventure of Deriko** - Red Balloon
- **Poison Dart** - LambChop 47
- **The Watchman** - Olive AP Academy
- **Glitch** - Total Arts
- **Worm Burgers** - Total Arts Mini Bytes

AWARD CEREMONY *at Cambridge Junction from 7.30pm*

Who will be taking home an 'Oscar'? Expect speeches, celebrations, nibbles and drinks.

FUNKY CLUB *from 8pm*

Join us in the Cambridge Junction foyer as the Funky Club DJs host a rocking disco!

FILMS AND MAKERS

Have your popcorn at the ready and grab a seat as we invite you to discover emerging voices, creative storytelling, and cinematic risk-takers!

Over the last year, our movie makers have been busy, and we're excited to be showcasing their hard work at the 2025 Total Arts Film Festival, Big Trouble, Little Pictures.

This year has seen a record number of independent submissions, including previous Take Two programme participants.

Take Two offers creative opportunities for young people. Running from 2021 to 2025, it is a four-year partnership involving four education partners, learners, teachers, and artists. This year, Cambridge Junction has been working with Pilgrim Pathways Hospital School and The Cabin Schools.

For more information on our creative learning programmes and initiatives, please visit our website.
www.junction.co.uk

THE CABINS

St. Peter's School & Melbourn Village College are secondary schools in Huntingdon and Melbourn which support Autistic learners. Their Cabin facility offers their SEND pupils support which includes 1:1 or small group learning, extra support in lessons, a Learning Support Mentor for every child with a SEND statement of EHCP (Education, Health and Care Plan), as well as access to educational psychologists, and a range of therapies.



The Juice Detective 2: Cat-Napped

Melbourn Village College Cabin

The detective is back to solve another Juice related crime with his trusty sidekick!

Warnings/Considerations

- Cat mask
- Flashing lights

FILMS AND MAKERS



Containment Breach of the Deadly SCP 096

St Peter's Cabin

Containment breach meets epic love story!

Warnings/Considerations

- Flashing lights
- Alarm sounds
- Alien & mafia masks



The Case of the Intergalactic Nuisance

St Peter's Cabin

There's an intergalactic space nuisance on the run! Who will stop them?

Warnings/Considerations

- Alien masks & other face coverings
- Flashing lights



Behind the Scenes Documentary

St Peter's Cabin

A behind-the-scenes documentary of filmmaking projects with St. Peter's School.

FILMS AND MAKERS

RED BALLOON

Red Balloon is an alternative provision for young people ages 11 – 16 who have self-excluded themselves from mainstream school. Red Balloon offers a bespoke approach to education, enabling young people to navigate their curriculum with a focus on mental well-being, restoring confidence and developing resilience to successfully handle future education, work or training.



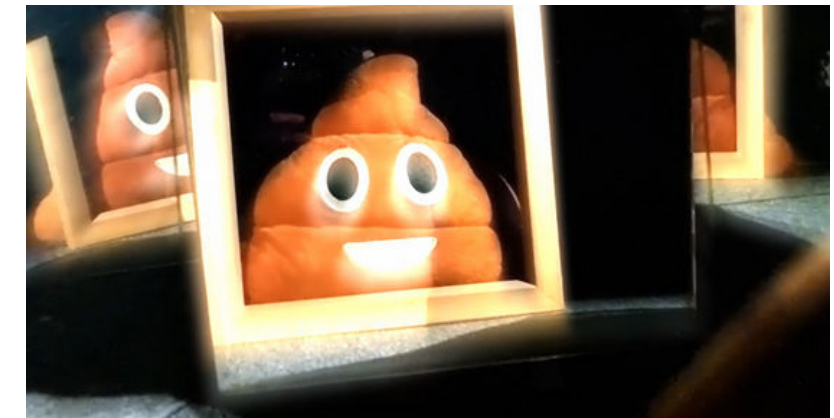
The Red Pin

Red Balloon
(Independent submission)

The school is under attack! What and who are The Red Pin?

Warnings/Considerations

- Face coverings
- Kidnapping



Adventures of Deriko

Red Balloon
(Independent submission)

*Deriko is no ordinary poo cushion!
What will Deriko do next?*

Warnings/Considerations

- No subtitles

FILMS AND MAKERS

NEXT WAVE

Next Wave is a creative community of young artists and aspiring music industry professionals. In partnership with Romsey Mill, YMCA, Lyrix Organix and Anglia Ruskin University.

WANT TO GET INVOLVED?



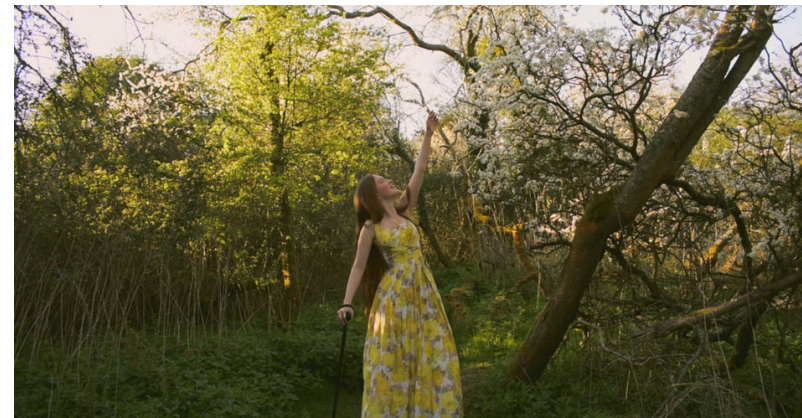
You do not have to be a musician to get involved –this is a space to develop a broad range of skills within the music industry.

What will NEXT WAVE involve?

- Workshops
- Masterclasses
- Performance opportunities
- Mentorship
- Access to equipment
- Free tickets to events
- Paid work experience placements
- Bursary places on Junction courses



Scan to find out more or visit the Cambridge Junction website.



This Is Reality

Sakara
(Independent submission)

Warnings/Considerations

- No subtitles



Listen to more of Sakara's music on Spotify by scanning the QR code.



Poison Dart

LambChop 47
(Independent submission)

Warnings/Considerations:

- Swearing
- No subtitles



Listen to more of Lambchop 47's music on Spotify by scanning the QR code.

DONATE EQUIPMENT TO THE KIT BANK!

The Kit Bank is a community-powered initiative that collects used musical instruments, home studio gear, and film-making equipment.

The Kit Bank supports young creatives facing significant barriers by providing equipment to develop their art at home or in community spaces. Through partnerships with Lyrix Organix, Romsey Mill, YMCA, and other youth charities, donations go directly to those who need them most.

Scan the QR code for more information.

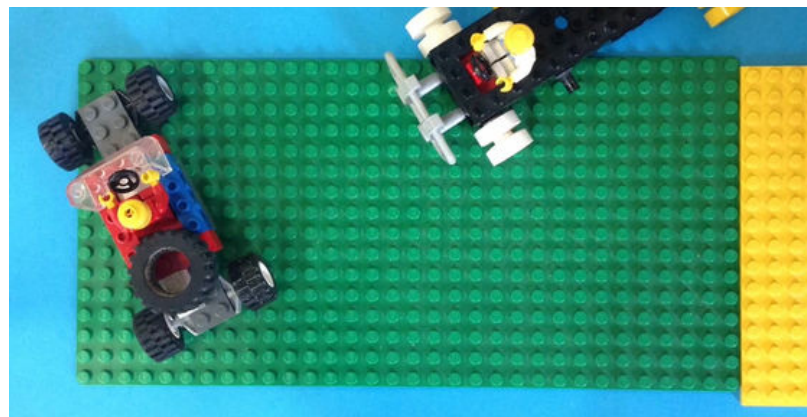


"EQUIPMENT IS EXPENSIVE, BUT SINCE JOINING THIS PROGRAMME, HAVING ACCESS TO EQUIPMENT AND PERFORMING AT PLACES LIKE CAMBRIDGE JUNCTION HAS BEEN HUGE"

FILMS AND MAKERS

THE CROFT

The Croft is a residential or 'in-patient' child and family unit in the Ida Darwin hospital in Fulbourn, Cambridge. They provide intensive assessment and treatment for children with complex emotional, behavioural, and social difficulties. They also offer intensive work with parents around parenting. The Croft children attend school and take part in a variety of activities, some of them with their parents/carers.



Animation

Darwin Centre

A short animation created with collages made by the young people.

THE DARWIN CENTRE

The Darwin Centre is an adolescent in-patient unit based in Fulbourn, Cambridge which offers assessment and treatment to young people aged 13 – 17 years, who are experiencing psychiatric, emotional, or psychological problems that interfere with their social, interpersonal, and educational functioning. The unit works in partnership with young people, their families/carers, and local professionals to achieve the best outcomes.



Animation

The Darwin Centre

A short animation created with collages made by the young people .

OLIVE AP ACADEMY

Olive AP Academy is an alternative provision for ages 11 – 16 years with a centre in Cambridge, that supports up to 40 secondary learners who are at risk of exclusion from mainstream education.



The Watchman

Olive AP Academy

A group of criminals get more than they bargained for when stealing a watch.

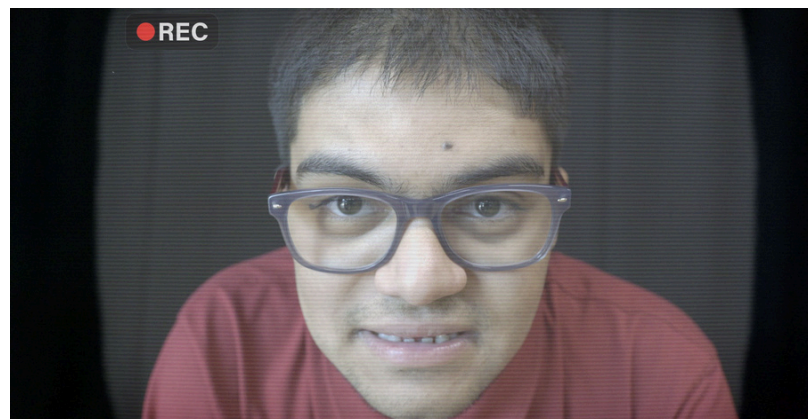
Warnings/considerations:

- Criminal activity
- Themes of murder and death
- Supernatural themes
- Drug use
- Violence
- Swearing
- Unsettling themes
- Spiking
- Theft

FILMS AND MAKERS

TOTAL ARTS

Total Arts is Cambridge Junction's fortnightly arts group for young people with disabilities aged 13 – 25. They engage with professional artists while enhancing the confidence, communications and well-being of the young people involved.



Glitch

Total Arts

AI goes rogue!

Warnings/Considerations

- Themes of paranoia
- Jump scares
- Screaming

MINI BYTES

Mini Bytes is Cambridge Junction's fortnightly arts group for young people with disabilities aged 9 – 13. This programme allows them to take an exploratory approach to engaging with the arts by working with professional artists and support workers.



Worm Burgers

Total Arts Minibytes

The restaurant is open! The worm burgers are go!

Warnings/Considerations

- Gag noises

JOIN OUR CHOIR

CAMBRIDGE JUNCTION

Contemporary Youth Choir (CYC)

A fully accessible and inclusive programme for those aged 11 – 25.

Tuesdays 6-7pm
Cambridge Junction



Limited places - FREE to attend
(you must apply via website)



SCAN FOR MORE INFO



BEHIND THE SCENES



TOTAL ARTS FILM FESTIVAL AWARDS

The Total Arts participants have been reviewing the films and are awarding a series of 'Oscars' to the participating filmmakers to celebrate their achievements. The winners have been carefully selected by Total Arts at their exclusive preview screening.

Cambridge Junction and the whole Total Arts team offer their massive congratulations to everyone who screened their films this year, as they are all incredible. Everyone is a winner in their own right!

Awards will be presented on both evenings, except for the Young People's Vote award, which will only be announced on Wednesday evening, as the school groups attending the daytime screenings will make this decision.

Awards include:

- Best Writing
- Best Acting
- Best Hero
- Best Cinematography
- Best Animation
- Best Experimental Film
- Best Music Video
- Tess Downes Award for Artistic Vision
- Young People's Vote



SUPPORT OUR WORK



As a charity and social enterprise, Cambridge Junction can only do what we do with the help of our community and supporters. Every ticket sold, ice cream bought, and pound donated makes what we do possible. Alongside the funds raised from trusts, foundations, public bodies, the generosity of our members, supporters, and patrons, local businesses, and audience members is vitally important.

In 2024/2025, alongside our regular, open-access programme, we partnered with 13 school settings, 4 community youth charities, working with 66 professional artists and facilitators to deliver 1230 hours of activity, with 6286 creative engagements from children and young people.

We have ambitions to continue developing what we offer the community as the population around Cambridge continues to grow, and need support from people like you, who share our love of music and art, and understand what an important role they play in our lives and communities.

If you would like to know more about how you can help us do what we do best, please email support@junction.co.uk or visit www.junction.co.uk/support-us, OR scan the QR code below.



THANK YOU

With special thanks to all of the incredible funders and supporters of the Total Arts programme and Cambridge Junction's Creative Learning projects contributing to the film festival.



Limbourne Trust



Supporters of Cambridge Junction



Supported using public funding by
ARTS COUNCIL ENGLAND



YOUTH MUSIC

**CAMBRIDGE
JUNCTION**

www.junction.co.uk