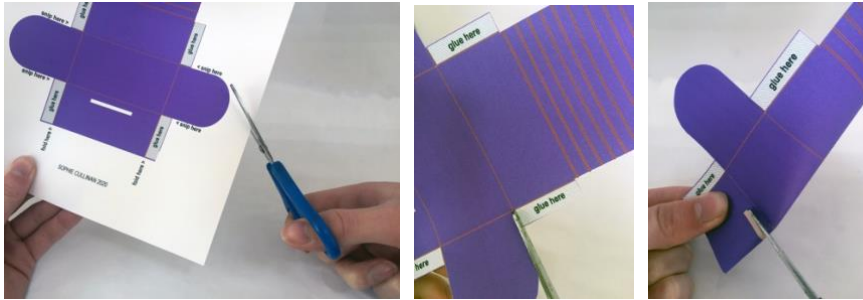


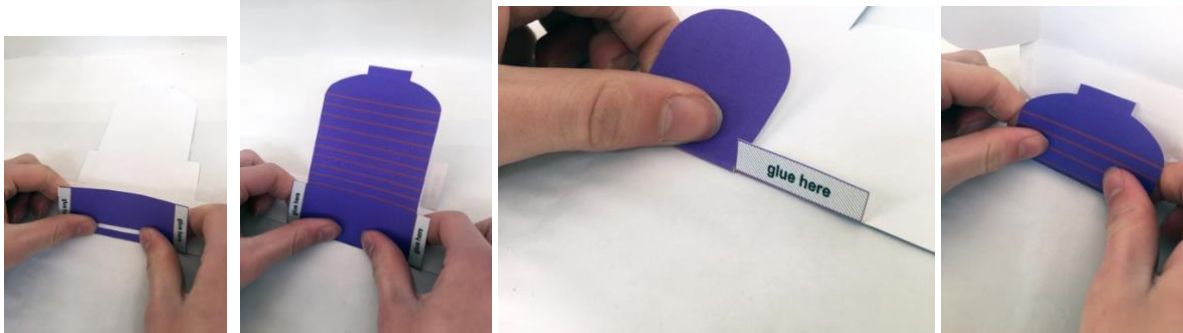
Hands on Happenings at Home Dust



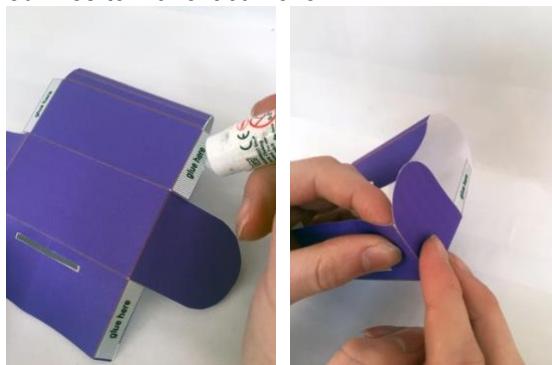
Memory Chest



Print out the memory chest onto thin card or paper, then stick onto card.
Cut round the outside of the chest.
Snip into four edges where marked.
Gently fold across the front to cut out the front slot.



Fold around all the marked edges and fold in the glue tabs.
Fold the lid along the marked lines to make it curl over.



Glue tabs and fix sides of chest.



Tuck in flap to close box
Now you can decorate and fill it with precious things.
Have fun!